

## NetGain CVS (Cloud Vista Suite)

NetGain Cloud Vista Suite extends NetGain's IT infrastructure management and SIEM (Security Incident and Event Management) capabilities to the Cloud.

It enables organizations to manage all their on-premise and cloud IT assets, whether they are in physical, cloud or hybrid networks. It also acts as a "Manager of Managers" in large and complex IT networks that are geographically distributed, providing users with a single consolidated view of all the IT infrastructure and security events throughout their entire operations.

NetGain Cloud Vista Suite runs on any cloud provider's platform, and consists of 2 components:

- NetGain Cloud Vista, running on a virtual machine in the Cloud
- NetGain EM Edge, running at remote physical sites

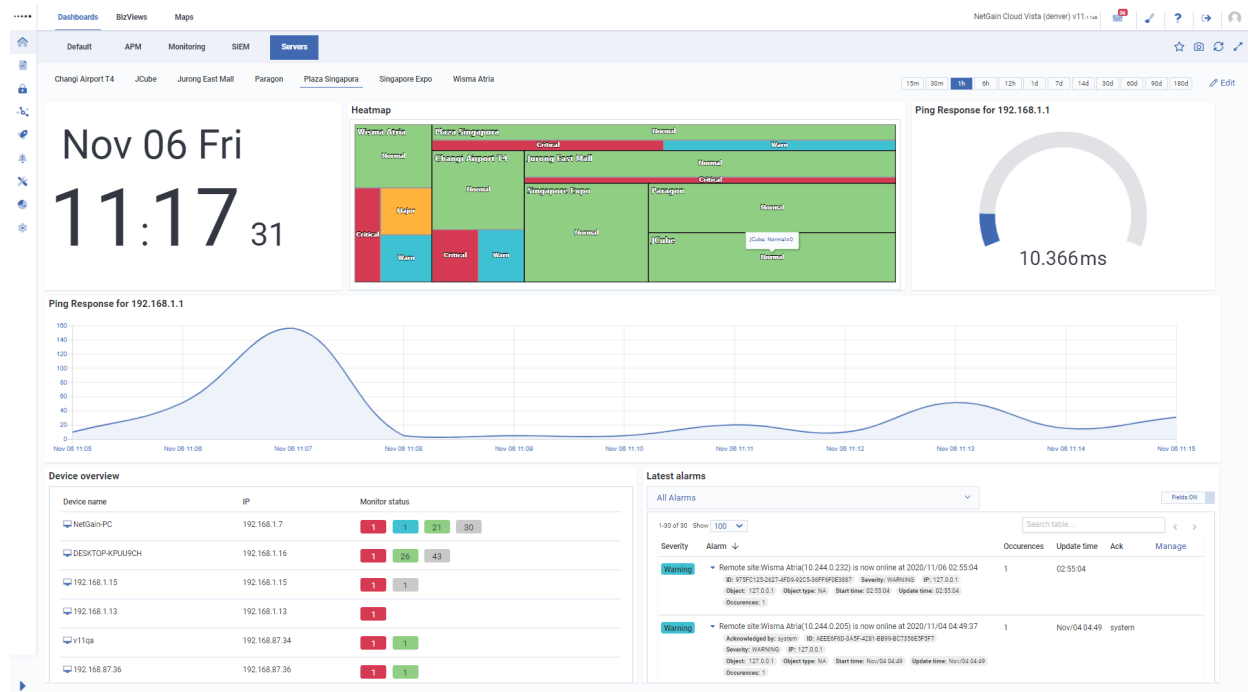


# NetGain systems

Maximize uptime. Develop insights. Provide answers.

## NETGAIN CLOUD VISTA

NetGain Cloud Vista runs on a VM in the Cloud and can discover and monitor devices in remote physical sites or in the Cloud running NetGain EM Edge or NetGain EM. You can perform device discovery and remote configuration, change threshold settings, and monitor the status of devices from the NetGain Cloud Vista console. When thresholds are crossed, alarms and notifications can be sent from NetGain Cloud Vista to the appropriate support team for further investigation. Comprehensive reports, by individual site or for the entire IT operations, are available.



Maximize uptime. Develop insights. Provide answers.

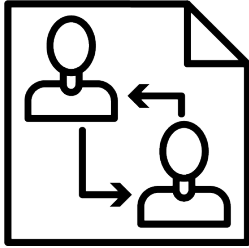
## NETGAIN EM EDGE

NetGain EM Edge is a lightweight software that runs at the physical or cloud site that is to be monitored and managed. It acts as a data collector and forwards data collected to NetGain Cloud Vista. NetGain EM Edge comes installed on a Raspberry Pi, in a VM or in a NetGain Appliance.

Monitor type	Name	Status	Update time	Interval	Method
Memory	Changi Airport T4/Server/Windows/NetGain-PC/OS performance/Memory utilization	Utilization:80%, Total Memory:7.78GB, Memory: Utilization > 80%	3:21:01 AM	5m	SNMPAgent
Memory	Plaza Singapura/Server/Windows/NetGain-PC/OS performance/Memory utilization	Utilization:85%, Total Memory:7.78GB, Memory: Utilization > 80%	Nov/03 10:10	5m	SNMPAgent
Memory	Wisma Atria/Server/Windows/NetGain-PC/OS performance/Memory utilization	Utilization:80%, Total Memory:7.78GB, Memory: Utilization > 80%	3:20:59 AM	5m	SNMPAgent
Memory	Wisma Atria/Server/Linux/localhost.localdomain /OS performance/Memory	Utilization:88%, Total Memory:1.79GB, Memory: Utilization > 80%	3:20:59 AM	5m	SNMPAgent
Mount Point	Wisma Atria/Server/Linux/localhost.localdomain /Mount points/cgroup mounted on /sys/fs/cgroup/systemd	Status:Missing, Mount Point: Status equals Missing	3:15:59 AM	15m	Agent
Mount Point	Wisma Atria/Server/Linux/localhost.localdomain /Mount points/tmpfs mounted on /sys/fs/cgroup	Status:Missing, Mount Point: Status equals Missing	3:15:59 AM	15m	Agent
Agent Status	Changi Airport T4/Server/192.168.1.12/Agent status	Exception:non-JRMP server at remote endpoint, Agent Status: Status equals STOPPED	3:21:01 AM	5m	Agent
Ping	Plaza Singapura/Server/192.168.1.15/Ping:192.168.1.15	Device down:Ping failure (1)	Nov/03 10:11	1m	ICMP

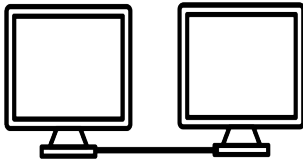


## BENEFITS



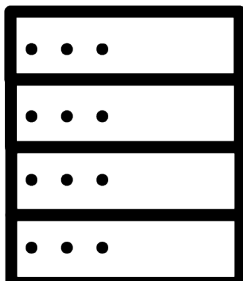
### Centrally manage multiple remote sites

NetGain Cloud Vista Suite lets you discover and monitor devices in remote sites. IT operations in the HQ would be able to use NetGain Cloud Vista Suite to ensure that the IT systems in remote sites are functioning properly.



### Manage hybrid networks

NetGain Cloud Vista Suite lets you centrally manage both your physical and cloud IT infrastructure spread across hybrid networks. Just as the Cloud removes the physical constraints to your IT growth needs, NetGain Cloud Vista Suite removes the constraints of managing only physical networks to let you manage all your IT assets, both on-premise and in the Cloud.



### Ideal for Managed Services Providers (MSPs)

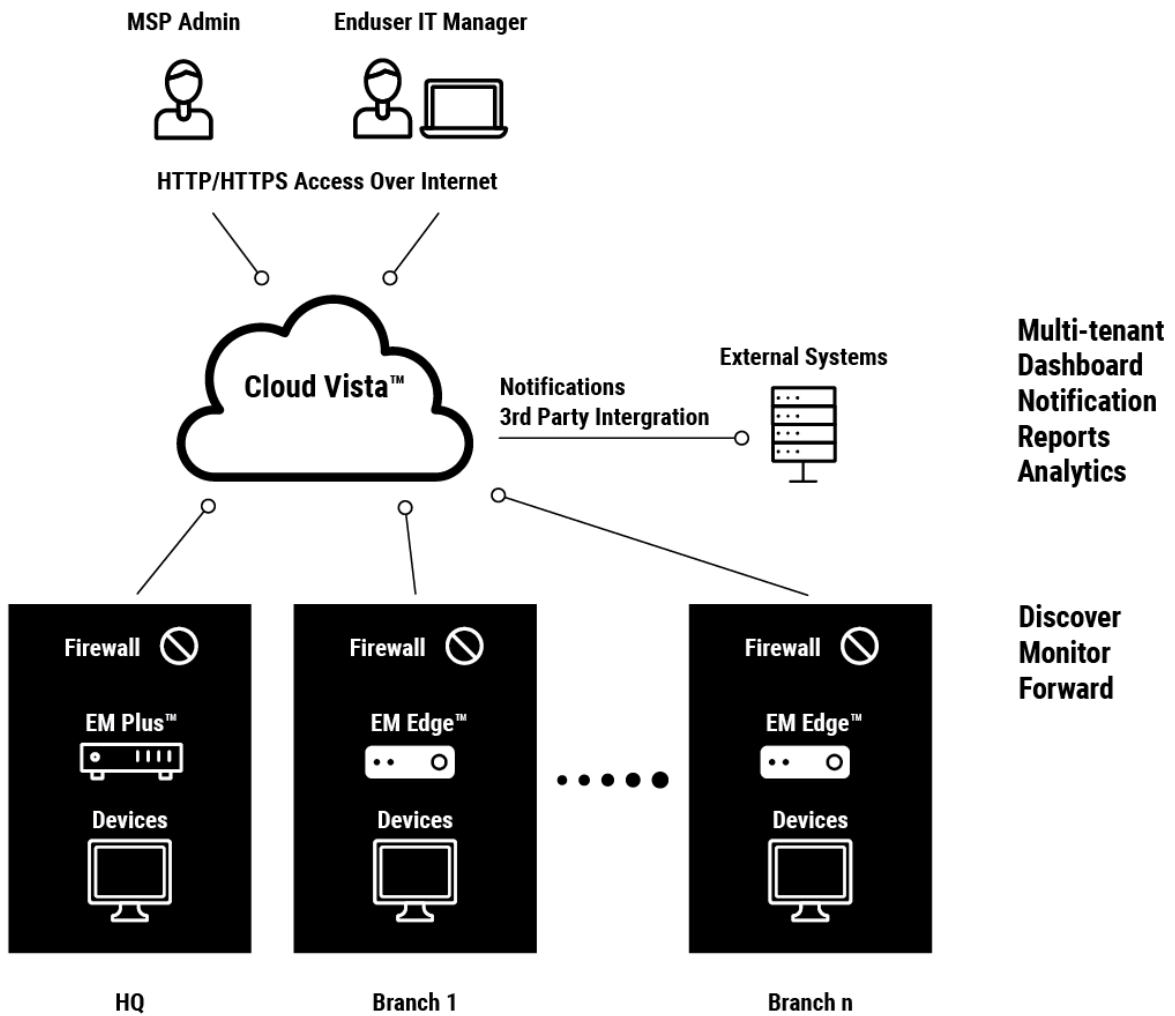
Being highly scalable and able to handle more than a million devices, NetGain Cloud Vista Suite provides MSPs with an easy-to-use and cost-effective cloud solution to offer IT infrastructure management and SIEM as a service to their clients.



# NetGain systems.....

Maximize uptime. Develop insights. Provide answers.

## HOW IT WORKS





Maximize uptime. Develop insights. Provide answers.

## ABOUT NETGAIN SYSTEMS

Founded in 2002, NetGain Systems is a provider of IT monitoring and security management and has established local teams throughout the Asia Pacific Region, including Australia, China and Singapore.

Regardless of location, type, size, or complexity, our solutions give customers the power to monitor their IT services, infrastructure, applications and devices with ease, all from a single management dashboard, so you can maximize uptime and achieve IT excellence.

By understanding that every organization's IT environment is different, NetGain's dynamic solutions are designed to be uniquely adaptable, fitting the unique demands of your operating environment and evolving with your growing organization.

